



GMT MONTHLY MEMBERSHIP PROGRESS REPORT

Results as of: 6/30/2017

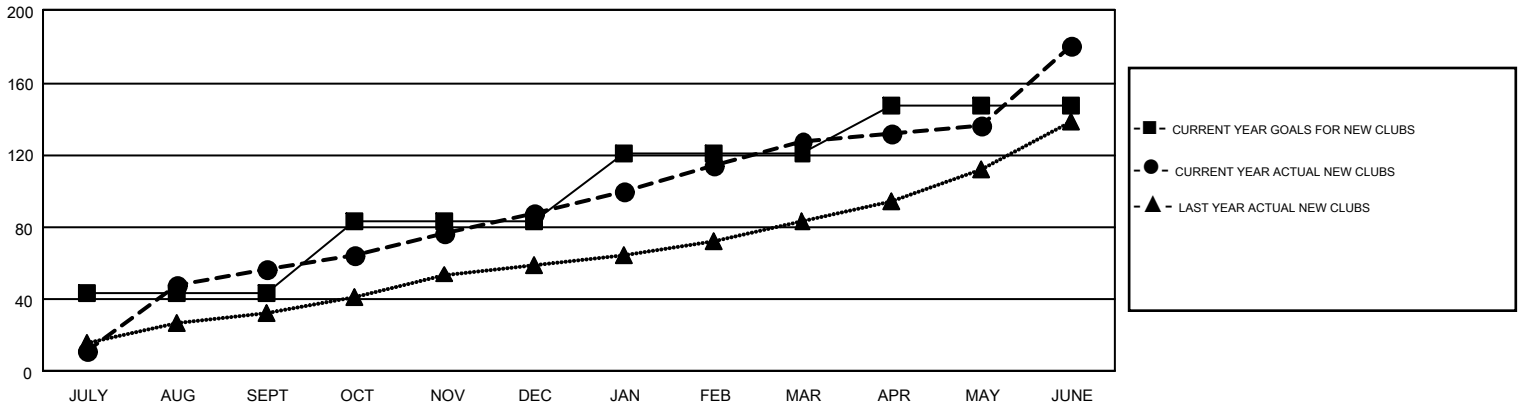
GMT Constitutional Area 6, Group A

GMT: OPEN

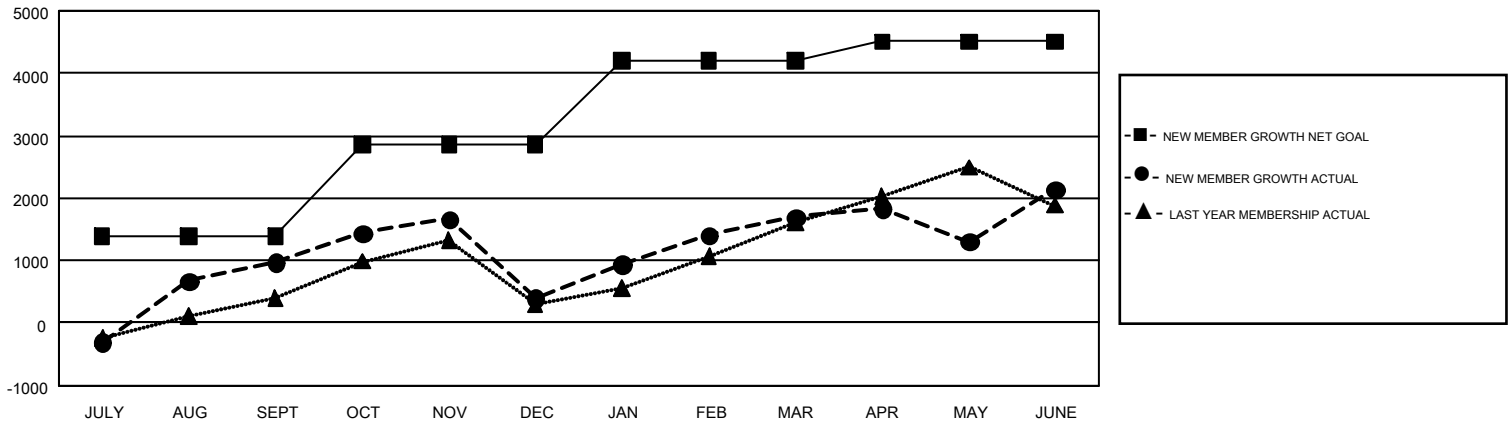
REPORT DOES NOT INCLUDE CLUBS IN UNDISTRICTED AREAS.

Clubs				Members			
RESULTS FOR 2016-2017				RESULTS FOR 2016-2017			
QUARTER	NEW CLUB GOAL	NEW CLUBS	DROPPED CLUBS	QUARTER	NEW MEMBER GROWTH NET GOAL (not reinstated or transfers)	NEW MEMBER GROWTH ACTUAL (not reinstated or transfers)	DROPPED MEMBERS ACTUAL (including transfers)
JULY/AUG/SEPT	43	57	9	JULY/AUG/SEPT	1,393	2,804	1,832
OCT/NOV/DEC	40	31	48	OCT/NOV/DEC	1,465	1,618	2,190
JAN/FEB/MAR	38	39	17	JAN/FEB/MAR	1,346	2,554	1,258
APR/MAY/JUNE	26	54	49	APR/MAY/JUNE	302	4,347	3,896

GOALS AND ACTUAL NEW CLUBS CUMULATIVE



GOALS AND ACTUAL MEMBERS CUMULATIVE



DROPPED CLUBS: 122	1,072 CLUBS OF 1,538 ADDED 1 OR MORE NEW MEMBERS	GENDER DISTRIBUTION MALE 35,007 (74.81%) FEMALE 11,786 (25.19%)
DROPPED MEMBERS DECEASED 110 CLUB CANCELLED 2,469 OTHER 6,597 <hr/> TOTAL 9,176	CLICK HERE FOR CUMULATIVE MEMBERSHIP DATA	TOTAL FAMILY UNIT MEMBERS 19,016 FAMILY MEMBERS PAYING HALF DUES 11,469